

MEMBER

*From Cedar Island to Cedar Point
and many places in between*

News



A newsletter for members of Carteret-Craven Electric Cooperative

March 2007

Relay team wins regional honor

The Carteret-Craven Electric Cooperative Relay for Life Team was honored Jan. 11 in Wilmington for having the Best Year Round Involvement for a team in all of Eastern North Carolina.

Relay for Life, the nationwide signature activity for the American Cancer Society, raises money to fight cancer and raise awareness of cancer in communities across the nation. Each year, fund-raising efforts culminates in the actual Relay for Life event, where families, schools, companies, hospi-

tals, and other community groups create teams of eight to 15 people who take turns walking around

a track all night to raise awareness and money to fight cancer.

The Relay for Life team was the top fund-raiser in Carteret County last year, bringing in more than \$32,000 of the \$248,000 raised countywide, and is well on its way toward that goal this year.

The next relay team event will be its very popular Relay for Life Auction on March 23 at the Civic Center in Morehead City.

Call Bill Ward or Kathy Wilson at 252.247.3107 for more information or to donate items or services for the auction.



CEO Craig Conrad and Customer Services Team Leader Kathy Wilson.

carteret-craven electric cooperative

on the web

Extend the day with an automatic Safeguard Light.

Go to the Products & Services Page at:

www.carteretcravenelectric.coop




MARK YOUR CALENDAR!

For eastern NC's largest spectator event!

MAY 4-6



cherrypointairshow.com
Toll Free 866-WINGS-NC



Over or Under?

Overhead power lines still more cost-effective

When March winds blow, they can break off tree limbs that fall onto power lines or create other weather-related problems that result in outages. Underground lines fail less frequently than overhead lines, so, why don't we put all our lines underground?

For one, the cost of installing underground cable is much higher than building overhead lines. In addition, underground line has about half the expected life of equivalent overhead line and it is much more expensive to replace.

"Building new underground lines costs as much as 10 times more than building new overhead lines," said CCEC Director of Engineering Services Jake Joplin.

Replacing existing overhead lines with underground lines costs even more.

Another disadvantage of underground lines is that when they do fail, even with the sophisticated technology we are using, it takes considerably longer to find and fix the problem, leaving members without power longer.

We have to use our special equipment to locate the problem and repair it," said CCEC Director of Engineering Services Jake Joplin. Unlike overhead service, you

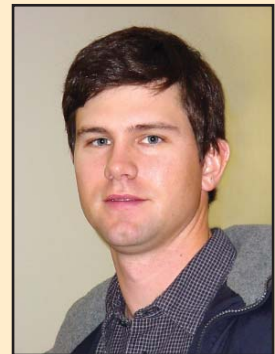
can't see the lines, which leads to more time troubleshooting the problem.

In areas already developed, such as neighborhoods or business districts, replacing overhead lines with underground cable would mean disturbing existing landscaping, boring under existing driveways and the like. It's costly to install

lines in a way that minimizes disruption to residents and businesses, as well as to the environment. Another issue is that installing underground lines in developed areas can cause accidental damage to other utility lines such as cable, phone or water. Conversely, underground lines can be accidentally damaged by crews working on other underground utilities.

The cooperative is, however, installing more and more underground service to new construction projects, 42 miles last year alone. The main reason developers ask for underground service is aesthetics - no poles and wires running alongside the roads - and those developers pay the higher price up front for underground installations.

Today, overhead lines are still more affordable to construct, repair and maintain, Joplin said. They're more accessible for maintenance and repair. Faults on the line can be visually inspected and repairs are usually made quickly.



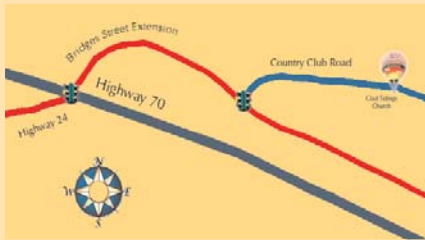
Jake Joplin
*Director,
Engineering Services*

Carteret-Craven Electric Cooperative	
Power Line Statistics *	
Transmission:	52 miles
Overhead Distribution:	1,150 miles
Underground Distribution:	968 miles
Total Active Meters:	35,993
Meters per mile of line:	16.6

* As of December 31, 2006

Carteret-Craven Electric Cooperative's Annual Meeting

Thursday May 3, 2007



Glad Tidings Church
Country Club Road, Morehead City
Doors open at 5 p.m.

Look for more information in the April issue of Member News.

Planting & digging

When branches grow too near power lines, trouble grows with them

Our area is prone to high winds all year, not just during hurricane season. Fallen trees and branches are a major cause of widespread power outages in our area. For that reason, CCEC has a comprehensive, industry-standard vegetation management program that includes trimming trees in a three-year cycle along more than 1,150 miles of line. The trimming may seem excessive to some, but is done with storm damage mitigation in mind.

The tree crews strive to preserve as much of a tree's beauty as possible while providing enough clearance between limbs and lines to help prevent storm damages.

A methodical tree-trimming and right-of-way maintenance program for power lines is crucial to delivering reliable electric power to consumers.

You can help, too, by planting taller trees away from power lines and keeping all trees, plants, shrubs and fences a minimum of 10 feet away from underground service equipment. This will prevent your landscaping items from being removed or

trimmed for access to equipment.

Here are a few landscaping ideas:

Use grass, gravel or 2-inch rock around electrical equipment, but do not change the grade.

Do not use ivy or other climbing plants around equipment.



Trees should be planted so that at maturity, they remain a minimum of 10 feet away from pad-mounted equipment, and far enough away from overhead lines so they do

not need trimming and will not obstruct a boom truck when access is needed.

To find trees and shrubs that suit your planting needs but won't interfere with the cooperative's equipment, check out the National Arbor Day Foundation's Tree Line USA program at www.arborday.org.

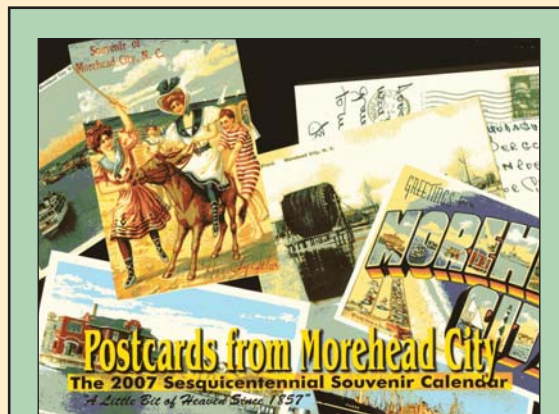
Co-op seeking comments on New PURPA Standards

On August 8, 2005, the Energy Policy Act of 2005 was signed into law. Among the many provisions of this federal legislation are five proposed standards having to do with energy conservation and consumer-driven rate management. These proposals were included as amendments to the Public Utility Regulatory Policies Act of 1978 (PURPA).

The five proposed standards include: (1) Net Metering, (2) Time-Based Metering and Communications, (3) Diversity of Fuel Sources, (4) Fossil Fuel Generation Efficiency and (5) Distributed Generation Interconnection.

Carteret-Craven is not required to adopt any of these standards; rather, it must consider whether or not to implement them. CCEC's board of directors will consider if these proposed standards are in the best interests of its members, and would appreciate input from you.

Please note that the procedure for receiving comments is a formal process. It is being managed on our behalf by our statewide trade association, NC Association of Electric Cooperatives. More information about the process and the new PURPA standards is available at www.ncemcs.com/purpa/purpadefault.htm or by mail [ATTN: PURPA Coordinator, P.O. Box 27306, Raleigh, NC 27611-7306], or by email at purpa@ncemcs.com. A hard copy will be provided at cost.



Calendar sales benefit Relay for Life team

More than a calendar, this custom-designed keepsake includes vintage postcards and photographs as well as historical dates significant to Morehead City. The calendars are \$15 and are available at the cooperative's office on Highway 24 in Newport.

Money raised from the calendar sales will be shared by the Morehead City Sesquicentennial Celebration organizers and the cooperative's Relay for Life team.

Morehead City is commemorating 150 years of culture and heritage with events throughout the year and a 10-day series of fun and educational events in May.



When dust collects on the coils at the bottom or back of your refrigerator, it insulates them, making it more difficult to keep food cold. Vacuum the coils every three months (more often if you have pets) to boost the refrigerator's efficiency up to 30 percent.

~ AARP Magazine



Touchstone Energy

carteret-craven electric cooperative

Offices

1300 Highway 24, Newport
450 McCotter Boulevard, Havelock

Contact

Phone: 252.247.3107 / 1.800.682.2217
Fax: 252.247.0235
E-mail: information@ccec.com

On the Web

www.carteretcravenelectric.coop