

MEMBER

From Cedar Island to Cedar Point
and many places in between

News



A newsletter for members of Carteret-Craven Electric Cooperative

January 2007

Bright Ideas grants fund 25 projects

Educators representing several Carteret and Craven county schools have earned \$18,783 in funding for 25 special projects, thanks to 2006-2007 Bright Ideas grants sponsored by Carteret-Craven Electric Cooperative.

Bright Ideas grants provide teachers with funds to help them provide top-quality instruction and unique learning experiences that would not be funded within regular school budgets.

Fifty-six applications for the coveted grants were submitted by educators at 23 schools. Volunteer judges screened proposals from the teachers and made

their selections,
pro-

viding individual grants ranging from \$167 to \$1,000.

The projects spread across the educational curriculum and grade levels - from science and math to life skills and art, and from elementary through high school.

The Bright Ideas program was initiated by the state's 27 electric cooperatives 12 years ago. Since then, the cooperatives have awarded Bright Ideas grants totaling more than \$4 million to teachers in grades K-12 across the state. Carteret-Craven has awarded more than \$175,000 over the past 12 years.

These innovative teaching ideas will impact more than 4,900 students in Carteret and Craven counties. From math and science to music and literature, educators will enhance learning for youngsters from kindergarten through 12th grade.

"The educators and projects selected are going to have a huge impact on their students," said Carteret-Craven CEO Craig Conrad. "It's impressive to see the creative ideas these winners have, and it feels great to be able



Gary Schroeder, life skills instructor at Broad Creek Middle School, thanks CCEC Director of Public Relations Bill Ward for the Bright Ideas grant that will update the school's "computer babies" that teach students the realities of caring for an infant.

to help them fund those ideas."

To fund all 25 grants this year, additional money was provided by the Carteret-Craven Electric Foundation. The foundation receives funds through Operation RoundUP®, a voluntary program that rounds up each member's monthly bill to the nearest dollar amount. The funds are used to benefit worthy causes as determined by a 10-member volunteer board of directors.

on the web

Scholarships for high school seniors are available online.

Go to:

www.carteretcravenelectric.coop



Electricity remains a good value

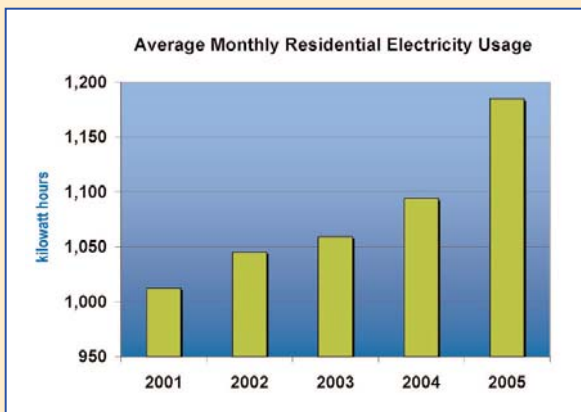
This month, CCEC's new rate schedule is in effect, yet even with the slight rise in cost to most members, electricity remains a good value.



Jerry Eborn
Vice-president of Finance & Accounting

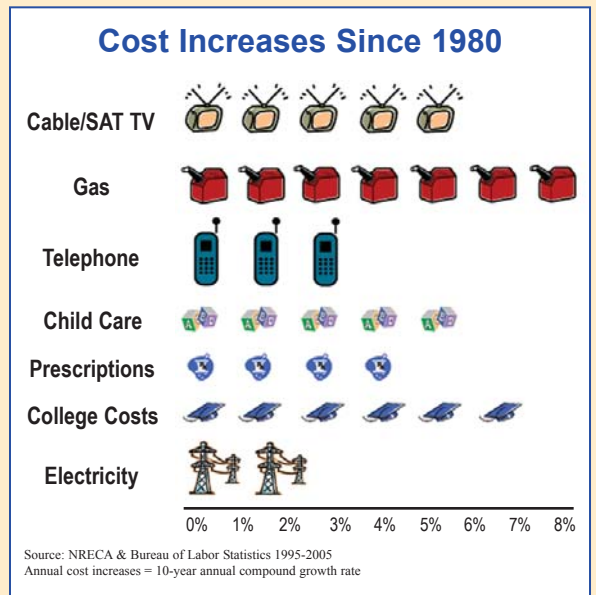
"Believe it or not, the national cost of electricity today, when adjusted for inflation, is less than what it was in 1980," said Jerry Eborn, CCEC Vice-president of Finance and Accounting. "Very few commodities have remained such a good value."

While costs of providing you electricity have increased (about 1 percent overall with the new rates), it's important to note that electricity usage has increased much, more. The average cooperative member uses about 17 percent more electricity today than just a few years ago. In 2001, Carteret-Craven Electric Cooperative



members used, on average, 1,012 kWh of electricity each month. Last year, the average monthly usage was 1,190.

Some of us are building larger homes; many of us have added appliances and electronics. Do you have more television sets? Have you added DVD players and recorders, computers, video game consoles? Do you have chargers plugged in all around your house for phones, batteries and tools? What's new in your kitchen? A bigger microwave or toaster oven? Or, perhaps you added a bread maker, juicer, or coffee maker. All these things add up.

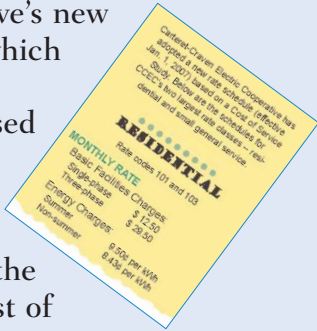


We can help you get the most out of your energy dollars, by promoting energy efficiency and encouraging conservation. We feature energy-saving tips each month on these pages. We offer guides to saving energy on our website - www.carteretcravenelectric.coop - and we have information available at our offices.

"As the demand for energy continues to rise and the costs of fuels fluctuate, we are committed to providing safe and affordable electricity at the lowest possible cost: a value we can all fit into our budgets," Eborn said.

New rate schedule effective this month

The cooperative's new rate schedule, which was effective January 1, is based on a Cost of Service Study conducted last year to identify the cooperative's cost of providing electric service to its members.



The last rate restructuring was put into effect Jan. 1, 2004, and much has changed in these past three years. The study examined such things as purchased power, material costs, labor and capital projects. It also took a look at all rate classes - residential, Time-of-Use, Small General Service, and others - to be sure any modifications accurately reflected the cost of providing service within each class.

A bill insert in January 2006 mailings shows the new rate schedule for residential and small general service (SGS). The insert also has a table you can use to track your usage month by month.

If you have questions about other rate classes, contact one of our customer service representatives at (252) 247-3107 or 1-800-682-2217.

Forget about your bill

Carteret-Craven-Electric Cooperative offers several options that will let you do just that.

You can quit worrying about due dates, writing checks or being unable to pay while you're away.

- **Automatic Bank Draft:** We draft your monthly electric payment from your checking or savings account on a specified draft date.
- **PowerPay 24:** You can pay your power bill from any computer, anytime, even if you are away from home. You get added peace of mind, knowing that your account will be credited immediately.

If you sign up for online bill paying, you will continue to receive bills in the mail. Payment information will be posted immediately, and you will receive a confirmation e-mail as well.

- **Automatic Bankcard Charge:** Credit or debit; Mastercard, Visa or Discover. Your payment will be charged about six days before the due date.

Paying your electric bill is even more carefree if you combine any of the above options with the cooperative's **Equalizer Payment Plan**. Your monthly electric bills are totaled for the year and then divided into twelve equal payments. You know exactly what your electric bill will be each month. For new accounts, we estimate monthly usage.

Bill paying doesn't get easier than that.

Sign up today!

**www.carteretcravenelectric.coop
(252) 247-3107 • 1-800-682-2217**

It's not too late...

College-bound high school seniors who live on our lines have until March 2, 2007 to apply for one of five scholarships from the Carteret-Craven Electric Foundation.

Winners will receive a \$4,000 scholarship (\$500 per semester for a total of four years). Deadline for applications is March 2, 2007.

The scholarship program is open to students whose primary residence is on Carteret-Craven Electric Cooperative's lines. To qualify, the student must be a high school senior in the current graduating class. The student cannot be a close relative of Carteret-Craven Electric Cooperative employee or director. For additional details and a downloadable application, go to:

www.carteretcravenelectric.coop

**Important
DATE!**

Winter can be dangerous even in the South

Are you prepared for winter weather?

In the South, we don't often think of winter weather as dangerous or even deadly, yet cold weather can kill... even here. Winter weather too often catches people unprepared.

Researchers say that 70 percent of the fatalities related to ice and snow occur in automobiles, and about 25 percent of all winter related fatalities are people who are caught off guard, out in the storm.

One of the gravest dangers of winter weather is wind chill. The wind chill is based on the rate of heat loss from exposed skin by combined effects of wind and cold. As the wind increases, heat is carried away from the body at an accelerated rate, driving down the body tempera-

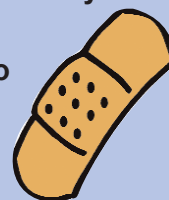
ture. Animals are also effected by wind chill.

To prepare for cold weather, you should have extra blankets on hand and ensure that each member of your household has a warm coat, gloves or mittens, hat, and water-resistant boots.

Don't forget to winterize your car, too, before cold weather hits.

Facts About Cold Weather Injuries

- 50% happen to people over 60 years old.
- More than 75% happen to males.
- About 20% occur in the home.



Tips to help ease your winter electricity bill

You have the power to control your winter energy costs by taking some simple steps to trim unnecessary energy use. Here are some tips to help you this heating season.

- **Heating can account for almost half of the average family's winter energy bill.** Make sure a professional checks your furnace or heat pump each year. Clean or replace air filters in your forced air heating system once a month to help your unit run more efficiently.

- **Set your thermostat as low as is comfortable in the winter.** The U.S. Department of Energy recommends 68 degrees. A programmable thermostat will automatically adjust your home temperature with your daily and weekend living

patterns to increase energy savings.

- **Sun can help heat your home.** Keep blinds or drapes of sun-exposed windows open in the daytime and closed at night. Close fireplace dampers when not in use.

- **Look for leaks.** Check walls, floors, roof, windows, and doors. Seal leaks between moving parts (between door and frame) with weather stripping. Fill leaks between non-moving parts (between window frame and wall) with caulking.

- **Don't like coming home to a dark house on short winter days?** Instead of leaving lights on, put timers on a few of the lights in your home, or install motion detectors and daylight sensors. Motion detectors on exterior floodlights improve home security at a lower operating cost.



carteret-craven electric cooperative

Offices

1300 Highway 24, Newport
450 McCotter Boulevard, Havelock

Contact

Phone: 252.247.3107 / 1.800.682.2217
Fax: 252.247.0235
E-mail: information@ccemc.com

On the Web

www.carteretcravenelectric.coop