


Member News

For Members of Carteret-Craven Electric Cooperative

Your Touchstone Energy® Cooperative 

Students Attend Youth Tour in Washington, D.C.

Two local high school seniors returned recently from Washington, D.C. after representing Carteret-Craven Electric Cooperative at the National Rural Electric Youth Tour. The students, Jesse Farmer of Emerald Isle and Taylor Wilson of Newport, joined approximately 1700 other students from across the nation during the Youth Tour.

While in Washington, the students participated in an all-states youth day rally, visited with their N.C. Congressional delegation on Capitol Hill and toured various monuments and other tourist sites. They also participated in a "soda pop co-op" where they learned how cooperatives operate.

The trip also included a formal dinner at the Kennedy Center, a visit to the National Cemetery and the Smithsonian.

An essay competition was the method of selection for the trip. Both winners wrote about the differences between hydroelectric power and nuclear power.

Jesse Farmer, son of Robert and Emily Farmer of Emerald Isle, is a rising senior at Croatan High School. He is active with Quiz Bowl, the Chess

(continued on page 24)

Cooperative Leadership Camp at White Lake, N.C.

Daniel Nead of Newport and Corrine Watson of Cape Carteret recently represented Carteret-Craven Electric Cooperative at the Cooperative Leadership Camp in White Lake, North Carolina. The camp is an educational program of the Cooperative Council of North Carolina. These students were selected through an essay competition answering, "What would life be like without electricity?"

While at camp, Watson was selected as the outstanding camper for the week and will receive the Thad Eure Cooperative Leadership Award that includes an expense paid trip to the 2003 National Institute on Cooperative Education on the campus of Virginia Tech in Blacksburg, Virginia. Five other campers, including Nead, were selected to accompany Watson and represent North Carolina at the Institute.

The Cooperative Leadership Camp is a five-day resident camping program with featured speakers, workshops, recreation, and small group sessions with special emphasis on how cooperatives operate and how to develop leadership skills. The camp is designed to recognize outstanding North Carolina young adults possessing leadership qualities.

Corrine Watson is a student at Croatan High School where she is active in tennis, FCA, SADD, Quiz Bowl and the Interact Club. She has been on the Principal's List her entire school career, served as Marshall for Junior Class Ring Ceremony, participated in GEMS (Girls Excelling in Math

(continued on page 23)



Local students, Jesse Farmer and Taylor Wilson, represented CCEC during this year's Youth Tour.



Line Superintendent Al Hill

Maintaining Clear *Rights of Way*

Each year, Carteret-Craven Electric Cooperative maintains more than 2000 miles of power line rights-of-way (ROWs). Careful planning is necessary in order to accomplish this task. Why is this type of maintenance so important? “Managing the growth of vegetation in and around rights-of-way is crucial to keeping the electricity flowing safely and reliably to your home or business,” explains Line Superintendent Al Hill, who has worked for Carteret-Craven more than 29 years. “We promote the growth of edible vegetation for animals and area habitats by using EPA approved and habitat friendly herbicides,” he adds.

You may be thinking, sounds good, but how does this work? To maintain cleared rights-of-way, we primarily use low-volume backpacks to spray a habitat friendly herbicide. This is important because it is a controlled spray, which targets the leaves of undesirable vegetation such as trees that will ultimately grow to be very large. Spraying the leaves of vegetation causes the photosynthesis process to stop without hurting nearby animals, water or streams, and other edible vegetation.

“Our vegetation management program is approved by the EPA and sponsored by Quail

Unlimited, Buckmasters, and the National Wild Turkey Federation as being the preferred means for promoting edible vegetation needed for wildlife to thrive in their natural habitat. Yet, it gives us the ability to control the growth of vegetation on or near rights-of-way. Ultimately, we are required by law to keep these areas safe,” comments Mr. Hill.

Another way we help keep rights-of-way clear is to use tree growth regulators. Tree growth regulators slow down the growth in branches and leaves near the crown area. Mainly this is used on trees encroaching rights-of-way, which can be from 15 to 50 feet of a nearby power line depending on the type of power line. Trees are comprised of moisture (water), which means they are excellent conductors of electricity. This situation can potentially be even more dangerous if a curious youngster climbs a tree that is located near a power line.

When planting young trees near your home, keep in mind their expected full growth potential, which will help save your cooperative time and money with fewer removals of trees near power lines in the future. For more information about our rights-of-way program or planting young trees, please give us a call at (252) 247-3107 or (800) 682-2217. □

Go to www.carteretcravenelectric.coop



for news and information about your electric cooperative and local community.

Cooperative Leadership Camp

(continued from page 21)



Corrine Watson and Daniel Nead at Cooperative Leadership Camp, White Lake, NC.

and Science), won the Scholar Athlete Award, Outstanding Cougar Award, and Academic Achievement Award. She is the daughter of Peter and Anita Watson of Cape Carteret.

Daniel Nead is also a student at Croatan High School where he is active in the Student Government Association, Fellowship of Christian Athletes, the National BETA Club, and Varsity Basketball. He has made the Honor Roll and Principal's List several times, won the Outstanding Cougar Award, been selected Who's Who Among American High School Students, selected for the National Honor Roll and received the Bronze and Silver Academic Achievement Award. Daniel was elected as Sophomore Class Vice President and Junior Class President. He was a runner-up in the R.A.D. Speech contest. Daniel is a member of the local 4-H club and is the son of Russell and Kim Nead of Newport. □

You can use a portable generator to supply electricity to your appliances if an emergency exists during a power outage. But if used improperly they can kill you and the people who are restoring power to your home or business. They can also damage your appliances.

Home emergency generators are usually powered by gasoline, which itself is dangerous and must be properly handled. Generator sizes vary. Common units can be from 8 to 14 horsepower and



capable of handling from 4,000 to 8,400 watts (including starting surge requirements). Prices may range from \$800 to \$3,000.

Connecting a generator to the main electrical supply for your house requires the services of a qualified, licensed electrician. Installation of the connection and switch can cost from \$600 to \$1,000. If a portable generator is connected to the main electrical supply coming into your home or business, the electrical generator could feed back into your cooperative's system and electrocute

Generator Safety

workers who are repairing electrical lines.

To avoid back-feeding of electricity into utility systems, you must have a qualified, licensed electrician install a double-pole, double-throw transfer switch between the generator and utility power to be in compliance with all state and local electrical codes. (A minimum of 10-gauge wiring must be used.)

Before connecting a generator to your household circuit, please notify Carteret-Craven EC.

Carteret-Craven Electric Cooperative offers 6% loans to members for making energy-saving improvements to their existing primary residence. The purpose of this loan program is to provide an affordable means for members to improve the energy efficiency of their homes.



These low-interest loans can be used to make improvements such as installing storm windows, weather-stripping, insulation, attic ventilation fans, devices that coordinate with our system to reduce overall total kilowatt demand, energy-efficient water heaters, and energy-efficient heat pumps. To help you with this process, we

can make recommendations for energy improvements through a thorough energy audit (inspection) of your home or provide you with a list of certified heat pump contractors.

We can design a payment plan that best fits your budget, with terms up to sixty months. For further information, please call (252) 247-3107 or (800) 682-2217.

Service Rules and Regulations

The Cooperative announces new line extension policies in effect as an effort to hold down the cost of power. Information about these changes can be found at www.carteretcravenelectric.coop or please call (252) 247-3107 to request a copy of this information.

Hurricane Special

Sunday, July 27 at 12 p.m.
Channel 7

Written and produced by your electric cooperative.

Learn how to prepare for severe weather.

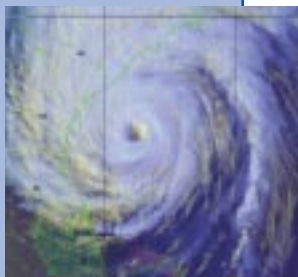


Photo Courtesy of NOAA

Youth Tour (continued from page

Club, and the Surfing Club. In 1999, Jesse was awarded 1st Place in the National Geography Bee (School Level) and in 2000, he placed 3rd in the event. He was a Duke TIP Talent Search Winner, a 2000 All-District Band Member, won the 2001 President's Award For Academic Excellence, won the American Legion Academic Achievement Award in 2002 and finished 3rd during the ECU Regional Algebra II Competition.

Taylor Wilson is a rising senior at Croatan High School. The son of David and Kathy Wilson of Newport, Taylor has won the Academic Achievement Award, Outstanding Cougar Award, Academic Achievement Science Award, the Academically Gifted Writers Award and the Attendance Award. He is a member of the National Art Honor Society, the Baseball Team, Summer Ventures Program and has been involved in various AG trips.

The Youth Tour is coordinated by the National Rural Electric Cooperative Association and participants are selected by local cooperatives like Carteret-Craven. In existence since 1940, Carteret-Craven provides reliable electricity to more than 28,000 members and is active with youth in a variety of ways including scholarships and Bright Ideas Grants. □